

SCHEDULE "A"

CITY OF NANAIMO PRELIMINARY LAYOUT ACCEPTANCE

RECEIVED
SUBC1308
MAY 14 2015
SLIB04103
CITY OF NANAIMO
ENGINEERING & SUBDIVISION

205-MAY-27 *Hema Morrison*
Date Approved By

2016-MAY-27
Expiry Date

| | |
|---------------------|----------------------|
| TOTAL SITE AREA | 32955 m ² |
| AQUATIC AREA | 6404 m ² |
| DEVELOPMENT AREA | 26551 m ² |
| PARK DEDICATION S&K | 17175 m ² |
| DEVELOPMENT AREA | 24836 m ² |

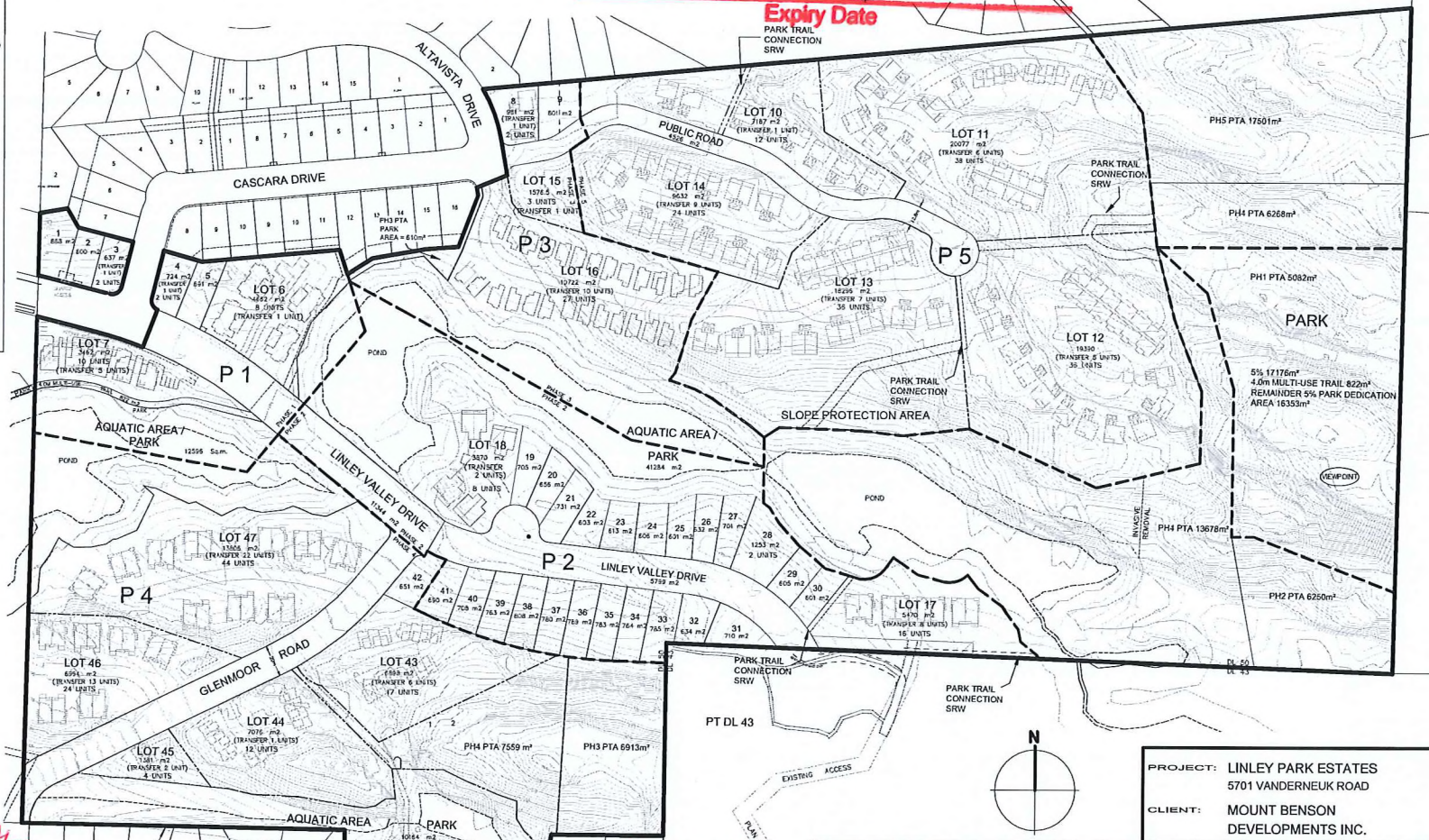
| | | | |
|----------------------|----------------------|-------------------------|--|
| PARK DEDICATION | 32955 m ² | PARK SHOWN (non-survey) | |
| 17175 m ² | 5% REQUIRED | | |
| 63591 m ² | TRANSFER AREA | | |
| 4.0m TRAIL | 822 m ² | | |
| PARK AREA | 16353 m ² | | |
| TOTAL AREA | 17175 m ² | | |

| |
|---------------------------------------|
| LOTS 600m ² OR LARGER = 27 |
| MULTI-SITES (M) & SMALL LOTS (SL) |
| M-Lot AREA UNITS TRANSFER TOTAL |

| | | | | |
|----|-------|----|----|----|
| 3 | 537 | 1 | 1 | 2 |
| 4 | 724 | 1 | 1 | 2 |
| 5 | 4662 | 7 | 5 | 8 |
| 7 | 3462 | 5 | 5 | 10 |
| 8 | 951 | 1 | 1 | 2 |
| 10 | 7187 | 11 | 1 | 12 |
| 11 | 20077 | 32 | 8 | 38 |
| 12 | 19390 | 31 | 5 | 36 |
| 13 | 18296 | 29 | 7 | 34 |
| 14 | 9832 | 15 | 9 | 24 |
| 15 | 15777 | 2 | 1 | 2 |
| 16 | 10222 | 17 | 10 | 27 |
| 17 | 5470 | 8 | 8 | 16 |
| 18 | 3570 | 6 | 2 | 8 |
| 28 | 1253 | 2 | 0 | 2 |
| 43 | 6956 | 11 | 6 | 12 |
| 44 | 7076 | 11 | 1 | 12 |
| 45 | 1381 | 2 | 2 | 4 |
| 46 | 8594 | 11 | 13 | 24 |
| 47 | 13506 | 22 | 22 | 44 |

| | | | |
|-------------|------------------------------|-----|-----|
| 144139 | 225 | 102 | 327 |
| T/A | 63562 (TRANSFER AREA) (100%) | | |
| TOTAL UNITS | = 354 UNITS | | |
| ZONING RID | = 16 UNITS/A | | |

| |
|-----------------------------|
| PHASED PARK AREA DEDICATION |
| PTA = PARK TRANSFER AREA |
| PHASE AREA UNITS |
| 1 5082 8 |
| 2 6250 10 |
| 3 7253 12 |
| 4 17501 44 |
| 5 1386 28 |
| TOTAL 63561 102 |



PROJECT: LINLEY PARK ESTATES
5701 VANDERNEUK ROAD
CLIENT: MOUNT BENSON DEVELOPMENTS INC.
DRAWING: DEVELOPMENT PARCELS LAYOUT/PHASING

| NO. | DATE | REVISION |
|-----|-------------|---------------------------------------|
| 01 | JUL 15 2012 | PREP ISSUE |
| 02 | AUG 20 2012 | PARK REVISION |
| 03 | SEP 05 2012 | TRAIL REVISION |
| 04 | SEP 20 2012 | PARK DEDICATION PHASING |
| 05 | SEP 20 2012 | PHASE BOUNDARY AND NEW LOT 7 BOUNDARY |
| 06 | SEP 20 2012 | PHASE BOUNDARY CHANGES |
| 07 | SEP 20 2012 | SHOW TRAILS OF PARK |
| 08 | SEP 20 2012 | PHASE CHANGES |
| 09 | SEP 20 2012 | PHASE BOUNDARY AND PHASE 2 DESIGN |
| 10 | SEP 20 2012 | PHASE BOUNDARY AND PHASE 2 DESIGN |
| 11 | SEP 20 2012 | PHASE BOUNDARY AND PHASE 2 DESIGN |
| 12 | SEP 20 2012 | PHASE BOUNDARY AND PHASE 2 DESIGN |
| 13 | SEP 20 2012 | PHASE BOUNDARY AND PHASE 2 DESIGN |
| 14 | SEP 20 2012 | PHASE BOUNDARY AND PHASE 2 DESIGN |
| 15 | SEP 20 2012 | PHASE BOUNDARY AND PHASE 2 DESIGN |
| 16 | SEP 20 2012 | PHASE BOUNDARY AND PHASE 2 DESIGN |
| 17 | SEP 20 2012 | PHASE BOUNDARY AND PHASE 2 DESIGN |
| 18 | SEP 20 2012 | PHASE BOUNDARY AND PHASE 2 DESIGN |
| 19 | SEP 20 2012 | PHASE BOUNDARY AND PHASE 2 DESIGN |
| 20 | SEP 20 2012 | PHASE BOUNDARY AND PHASE 2 DESIGN |
| 21 | SEP 20 2012 | PHASE BOUNDARY AND PHASE 2 DESIGN |
| 22 | SEP 20 2012 | PHASE BOUNDARY AND PHASE 2 DESIGN |
| 23 | SEP 20 2012 | PHASE BOUNDARY AND PHASE 2 DESIGN |
| 24 | SEP 20 2012 | PHASE BOUNDARY AND PHASE 2 DESIGN |
| 25 | SEP 20 2012 | PHASE BOUNDARY AND PHASE 2 DESIGN |
| 26 | SEP 20 2012 | PHASE BOUNDARY AND PHASE 2 DESIGN |
| 27 | SEP 20 2012 | PHASE BOUNDARY AND PHASE 2 DESIGN |
| 28 | SEP 20 2012 | PHASE BOUNDARY AND PHASE 2 DESIGN |
| 29 | SEP 20 2012 | PHASE BOUNDARY AND PHASE 2 DESIGN |
| 30 | SEP 20 2012 | PHASE BOUNDARY AND PHASE 2 DESIGN |
| 31 | SEP 20 2012 | PHASE BOUNDARY AND PHASE 2 DESIGN |
| 32 | SEP 20 2012 | PHASE BOUNDARY AND PHASE 2 DESIGN |
| 33 | SEP 20 2012 | PHASE BOUNDARY AND PHASE 2 DESIGN |
| 34 | SEP 20 2012 | PHASE BOUNDARY AND PHASE 2 DESIGN |
| 35 | SEP 20 2012 | PHASE BOUNDARY AND PHASE 2 DESIGN |
| 36 | SEP 20 2012 | PHASE BOUNDARY AND PHASE 2 DESIGN |
| 37 | SEP 20 2012 | PHASE BOUNDARY AND PHASE 2 DESIGN |
| 38 | SEP 20 2012 | PHASE BOUNDARY AND PHASE 2 DESIGN |
| 39 | SEP 20 2012 | PHASE BOUNDARY AND PHASE 2 DESIGN |
| 40 | SEP 20 2012 | PHASE BOUNDARY AND PHASE 2 DESIGN |
| 41 | SEP 20 2012 | PHASE BOUNDARY AND PHASE 2 DESIGN |
| 42 | SEP 20 2012 | PHASE BOUNDARY AND PHASE 2 DESIGN |
| 43 | SEP 20 2012 | PHASE BOUNDARY AND PHASE 2 DESIGN |
| 44 | SEP 20 2012 | PHASE BOUNDARY AND PHASE 2 DESIGN |
| 45 | SEP 20 2012 | PHASE BOUNDARY AND PHASE 2 DESIGN |
| 46 | SEP 20 2012 | PHASE BOUNDARY AND PHASE 2 DESIGN |
| 47 | SEP 20 2012 | PHASE BOUNDARY AND PHASE 2 DESIGN |
| 48 | SEP 20 2012 | PHASE BOUNDARY AND PHASE 2 DESIGN |
| 49 | SEP 20 2012 | PHASE BOUNDARY AND PHASE 2 DESIGN |
| 50 | SEP 20 2012 | PHASE BOUNDARY AND PHASE 2 DESIGN |



DATE: JULY 06/12
SCALE: 1:1250
DRAWN: CHT
DATE: 05/12/10
SHEET: 1 OF 1

WILLIAMSON & ASSOCIATES
PROFESSIONAL SURVEYORS
1050 N. HURON ST. NANAIMO BC V9R 1K5
PHONE: (250) 758-7711 FAX: (250) 758-7772
WWW.WILLIAMSONAS.COM

RENEWAL
CITY OF NANAIMO
PRELIMINARY LAYOUT
ACCEPTANCE

RENEWAL
CITY OF NANAIMO
PRELIMINARY LAYOUT
ACCEPTANCE

RENEWAL
CITY OF NANAIMO
PRELIMINARY LAYOUT
ACCEPTANCE

2016-MAY-10 *Hema Morrison*
Date Approved By
2017-MAY-27
Expiry Date

2017-MAY-11 *Christa*
Date Approved By
2018-MAY-27
Expiry Date

2018-MAY-14 *Rob Allen*
Date Approved By
2019-MAY-27
Expiry Date